



**22nd Bank  
Management  
conference**

# *Intelligent Automation for Operational Excellence*

**Manos Kokolakis, MSc**  
Customer Success Manager  
[mkokolakis@intrust.gr](mailto:mkokolakis@intrust.gr)

**Euclides Stefanopoulos**  
Unix & Middleware Team Lead  
[estef@intrust.gr](mailto:estef@intrust.gr)



- Although DORA main focus is on Cyber Resiliency, Resiliency in General will be a base
- IT Automation is key to Improve General Resiliency in Complex Systems
  - Lower Mean Time to Repair in case of Incident
  - By less Incidents
  - Improved Resource Availability
  - Automated vulnerability remediation



# Need for Automation to Support DORA Compliance

## Article 7

Tools to support

- Reliability
- Sufficient Capacity
- Technological Resiliency

## Article 10

- Vulnerability and patch management ....

## Article 11

- Ensure Continuity
- Quick Response to all ICT Incidents

## Article 13

- Collect all info for Post mortem
- Improve Operations based on Evidence

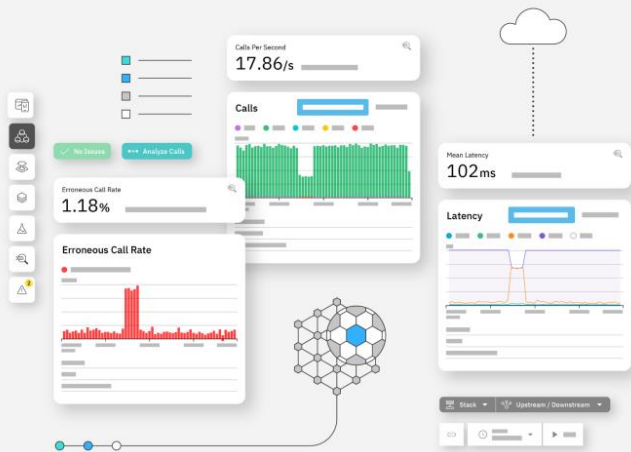
## Article 17

- Early warning on ICT Incidents
- ICT Incidents are Prioritised and Managed

## Article 19

- Data is Collected on Major ICT Incidents
- Reporting and Technical Clarification

AI-powered capabilities to manage hybrid cloud application performance and technology spend

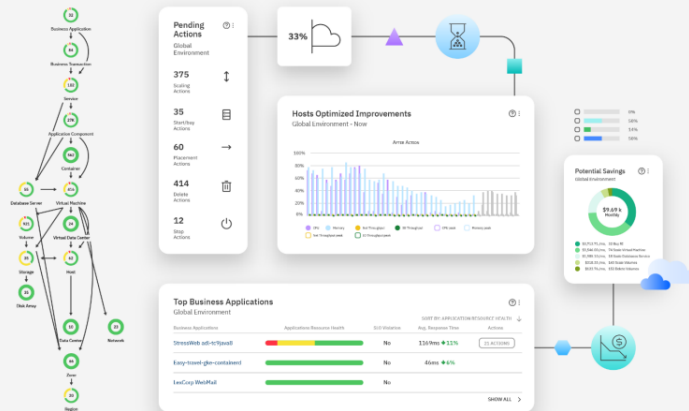


## OBSERVABILITY

Application Performance Management (APM)



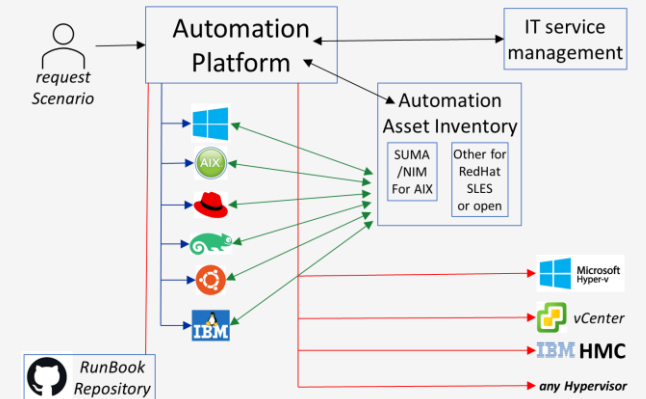
INSTANA



## OPTIMIZATION

Application Resource Management (ARM)

**IBM Turbonomic**



## VULNERABILITY REMEDIATION

Automate patch management process



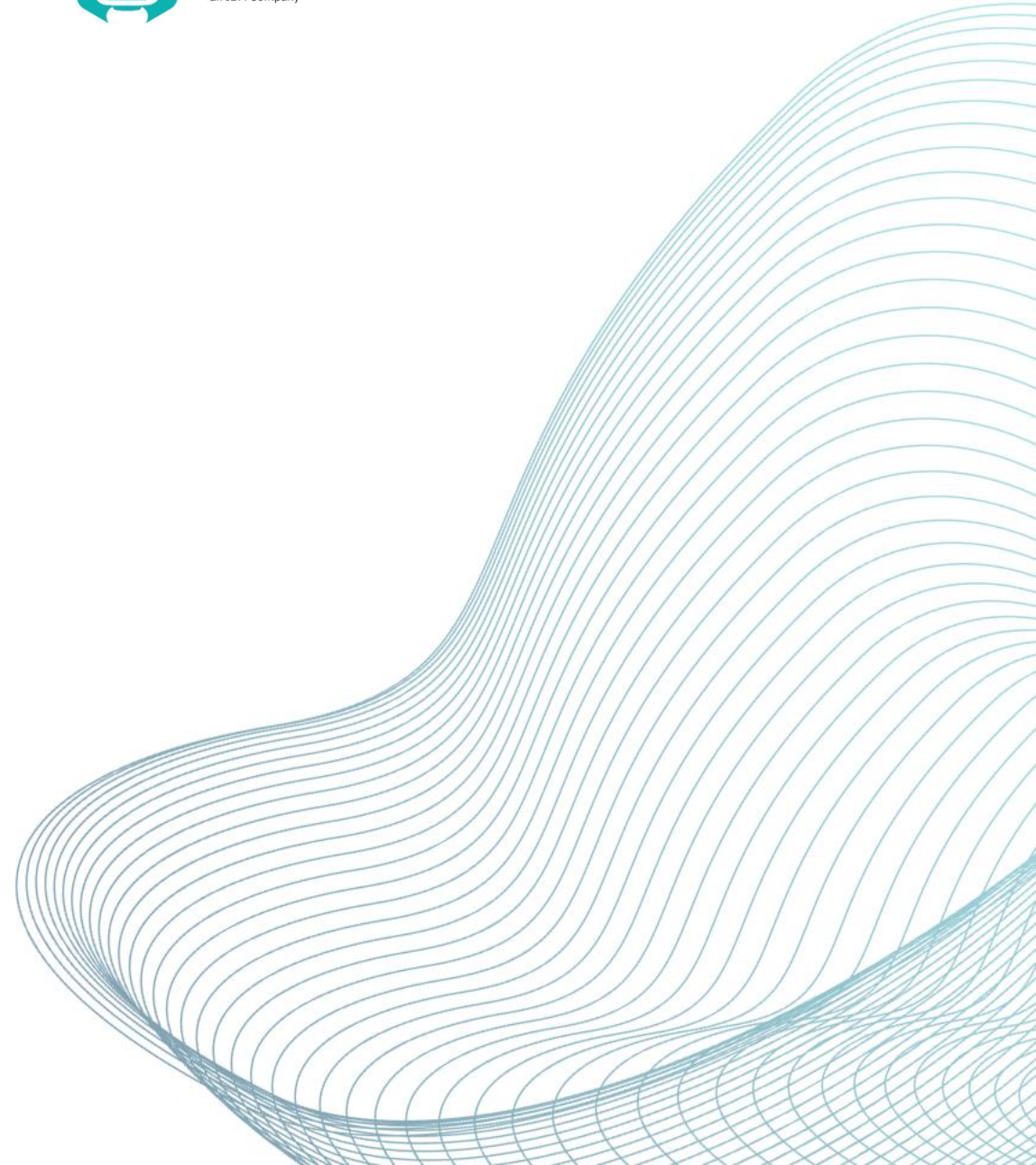
# Enterprise Observability

---

Enhance comprehensive visibility with “out-of-the-box” data-driven insights for health and performance monitoring



**INSTANA**  
an IBM Company



# IBM Instana – Observability

Single agent w/ automatic configuration **collecting 100% of distributed traces!**



## True Automation

- Auto instrumentation (any/all languages)
- Continuous real time discovery, 300+ technologies (including mainframe)
- Full-stack dependency mapping
- Easy configuration and maintenance

## High Fidelity Data

- 1-second granularity
- 100% trace capture, no sampling!
- Track every inter-dependency

## Actionable Information

- OTB performance (KPI) dashboards
- Real-time anomaly detection
- Root cause analysis & correlated alerting



**Why 1-second granularity?**  
**Instana sees problems other tools miss**



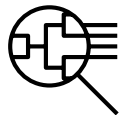
# IBM Instana Observability

Real-time observability to understand your application and infrastructure stack



Full-stack visibility with context to assure application health and performance

## Enterprise Observability



- Full-stack application visibility
- Mapping, tracing, and profiling
- 1-second granularity and no sampling

## Automatic and Continuous



- Self-monitoring, auto-updating single agent
- Discovery, deployment, and configuration
- Real-time change detection and dependency mapping

## Context and Visualization



- Zero-configuration dashboards, alerting, troubleshooting
- Automatic anomaly detection
- Unbounded analytics

## Intelligent Action



- Root cause analysis with correlated alerting
- Guided troubleshooting
- Immediate feedback of pipelines and canaries

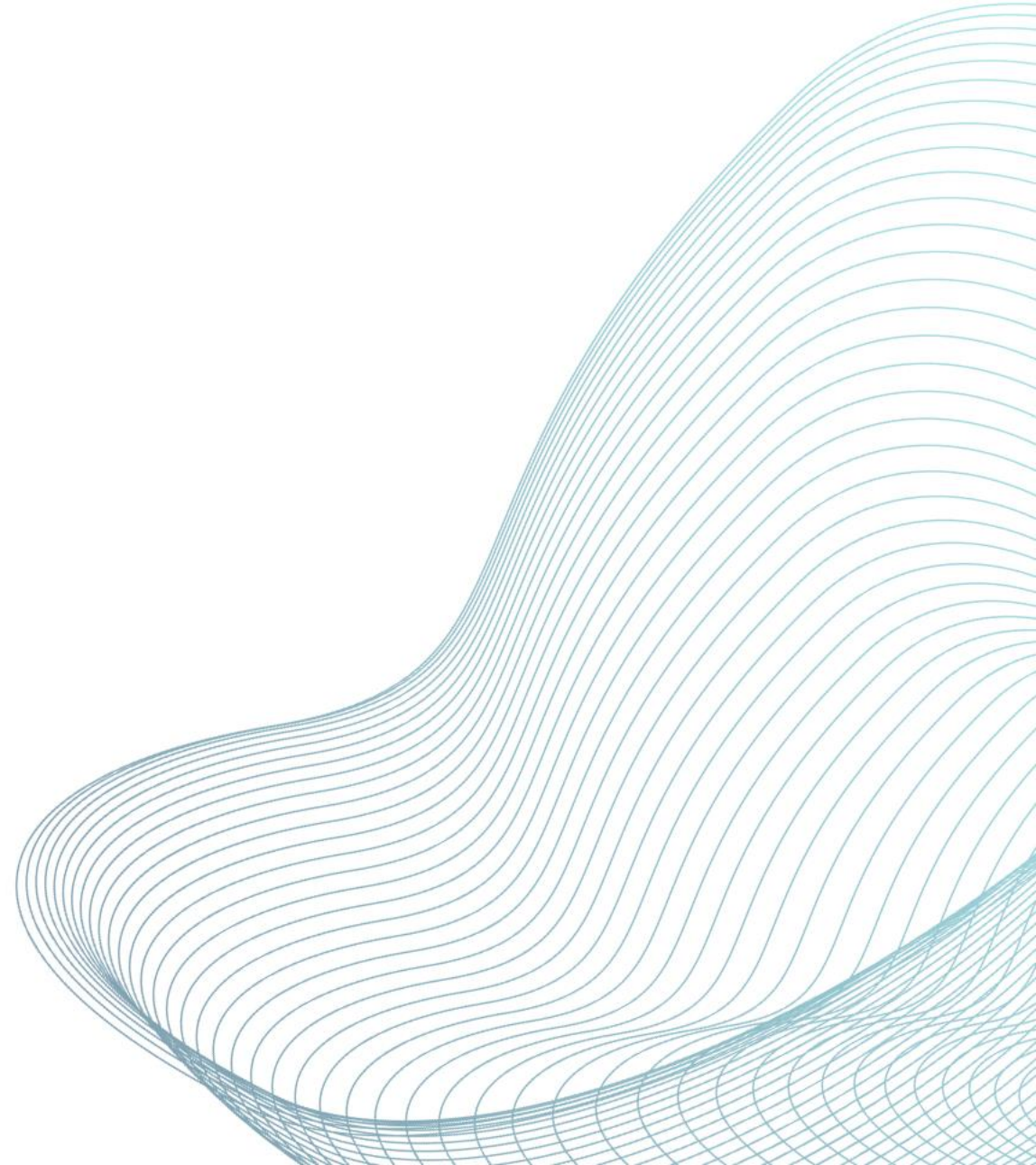


# Automated Operations

---

Dynamically and continuously assure cost-effective application performance and resource utilization

IBM Turbonomic

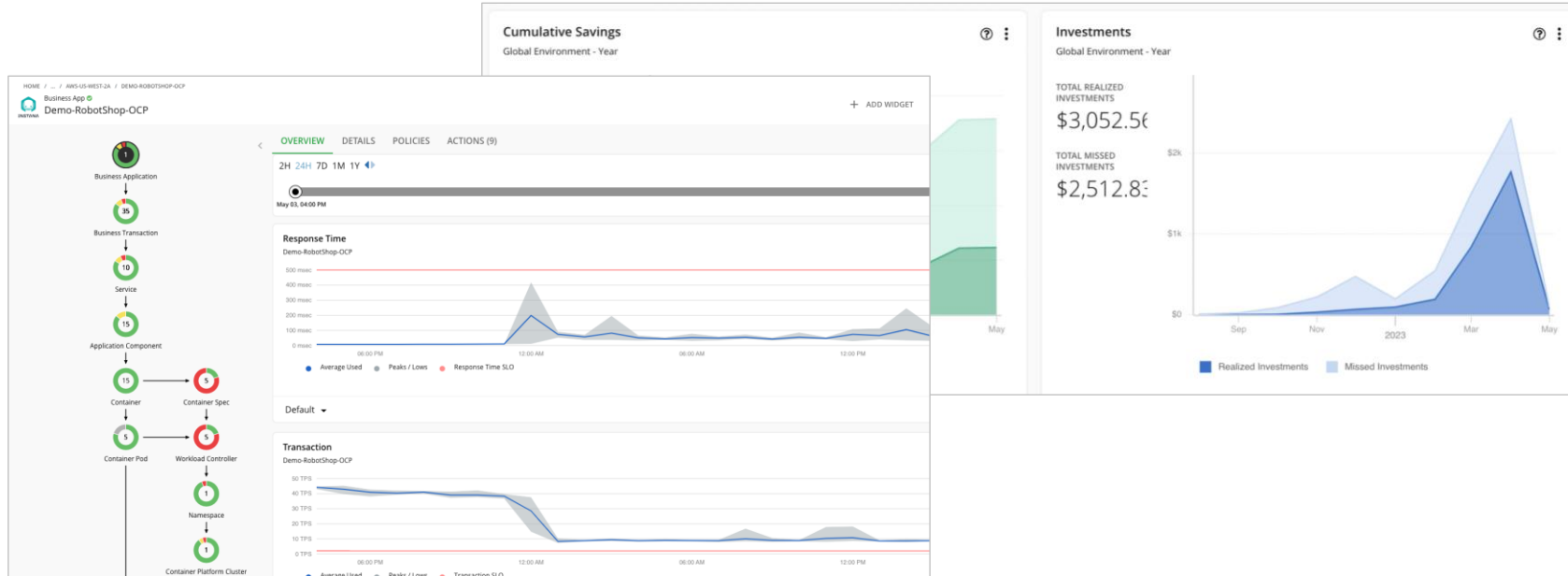




# IBM Turbonomic Hybrid Cloud Optimization

## Optimization you can automate to unlock elasticity.

Never compromise performance. Always stay on budget.



### CLOUD ROI

# 33%

reduction in public cloud spend due to dynamic scaling and workload resizing

### EFFICIENCY ON-PREM

# 70%

By understanding app demand, avoided required infrastructure growth spend by 70%

### MORE PRODUCTIVE TEAMS

# 30%

engineering time back

Makes application-aware cost optimization decisions at a rate that exceeds human scale. It continuously matches application demand to infrastructure supply, accounting for resource needs and dependencies across the full stack—application to platform to hardware.

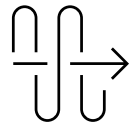
✓ **Application** performance and dependencies are understood—actions generated ensure apps get exactly what they need when they need it.

✓ **Full-stack context** ensures automation accounts for resource dependencies across applications, platform, and infrastructure—anywhere.

✓ **Adoption of automation** is facilitated by purpose-built UI providing data and insights users need to get started, as well as seamlessly integrate with pipelines and workflows.

Maximize business value for every euro invested in public, private, hybrid, and multicloud

### Continuous Cost Performance



- Give applications the resources needed, when they need them, continuously and automatically.
- No guessing, no compromising.
- Just results.

### Quicker Time to Value



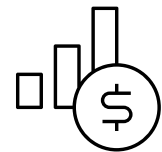
- Take nondisruptive, reversible actions to immediately reduce costs, improve performance, and build trust.
- Automate more actions for results that last.

### Automate and Optimize



- Confidently automate cost optimization, so it can be seamlessly built into transformation, not just an afterthought.

### Maximize Savings



- Harness the power of the cloud's consumption model.
- Optimize all things large and small to maximize savings at scale.

# Powerful alone, better together

Proactive

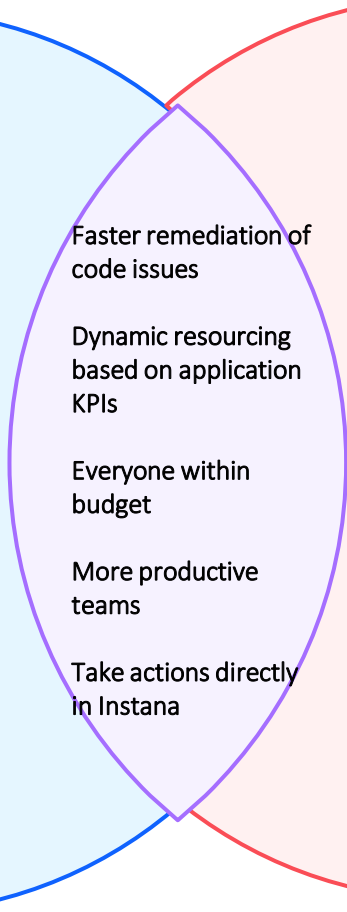
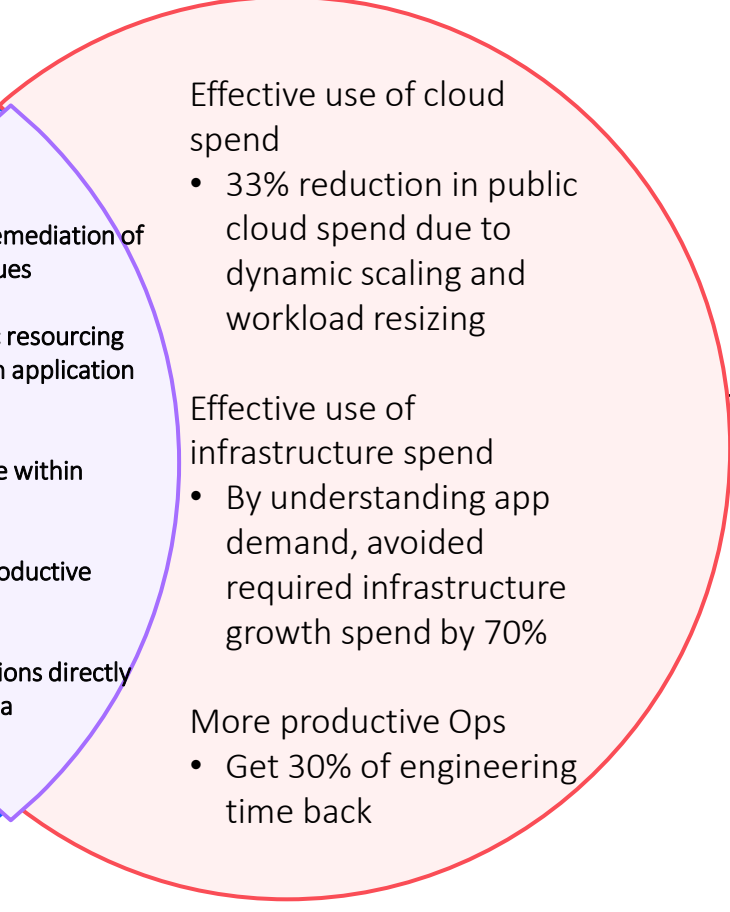
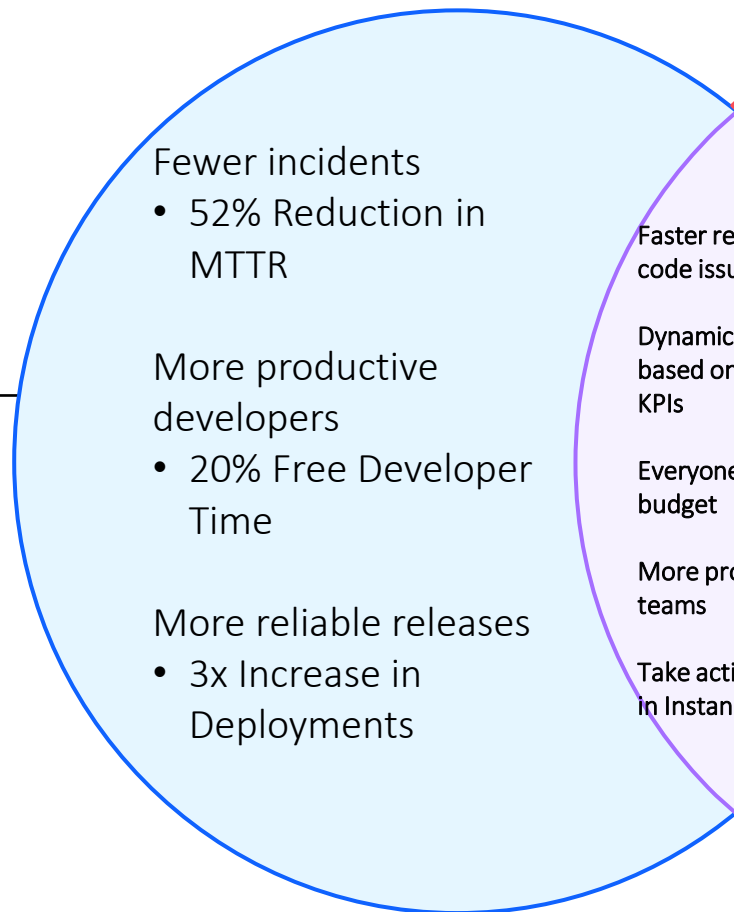
Preventative



## IBM Instana

Real-time observability

Help those that can fix it, find it faster.



## IBM Turbonomic

Hybrid cloud cost optimization

Performance-first dynamic resourcing

# Automated Patch Management

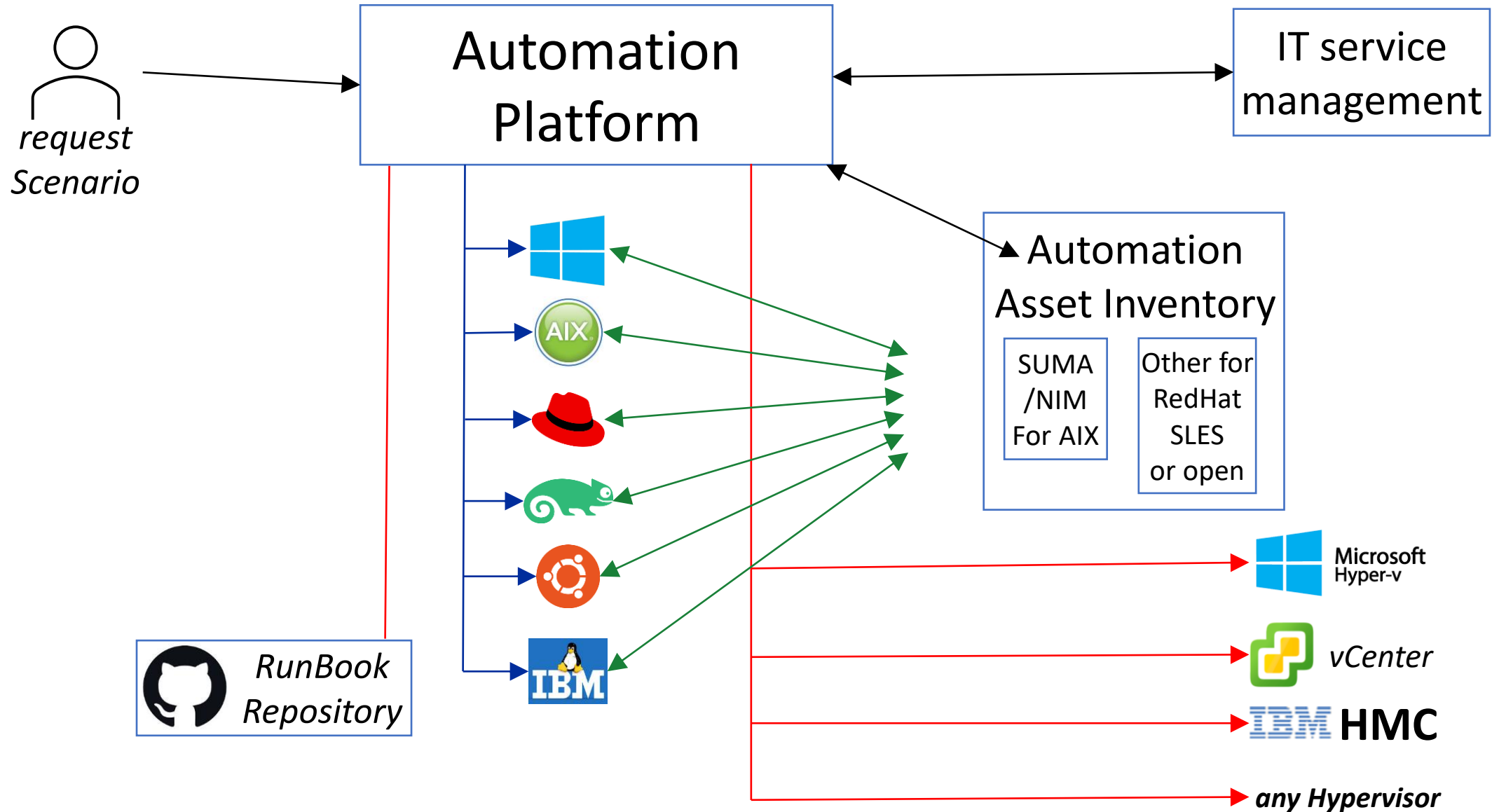
---

Automate patch management on all systems and OS to remediate vulnerabilities.

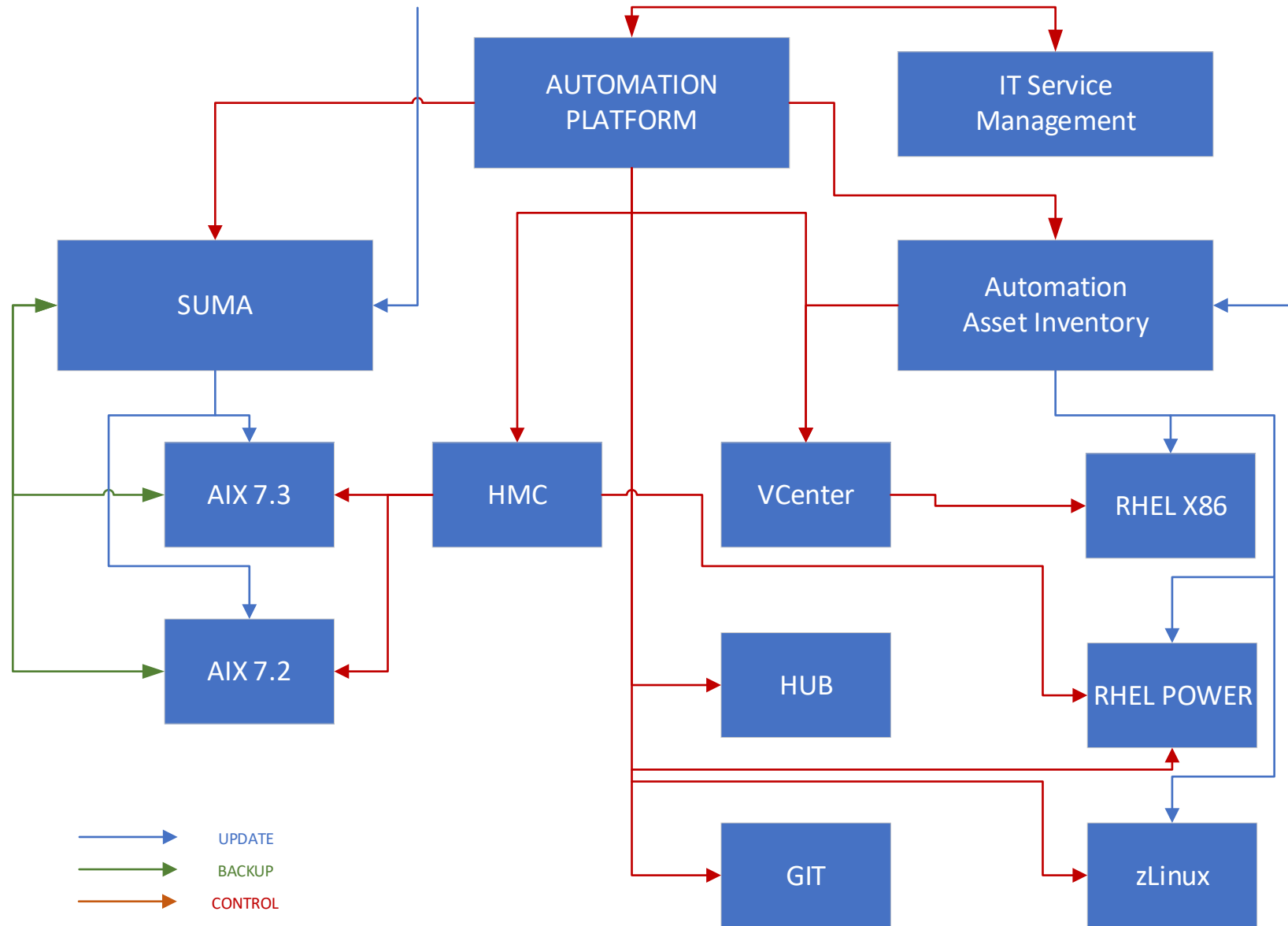




# Automated Patch Management

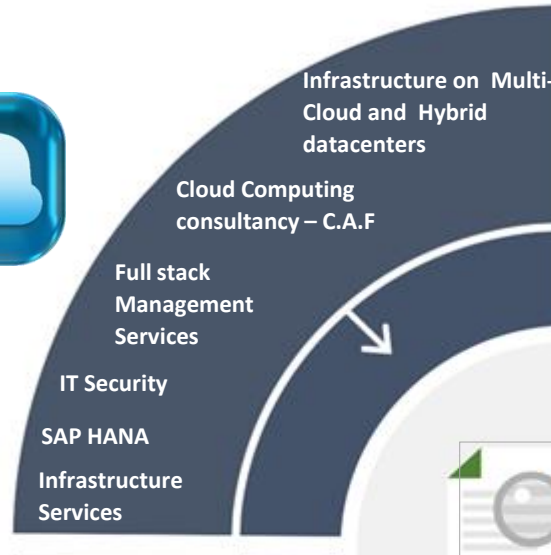


# Automated Patch Management ex.

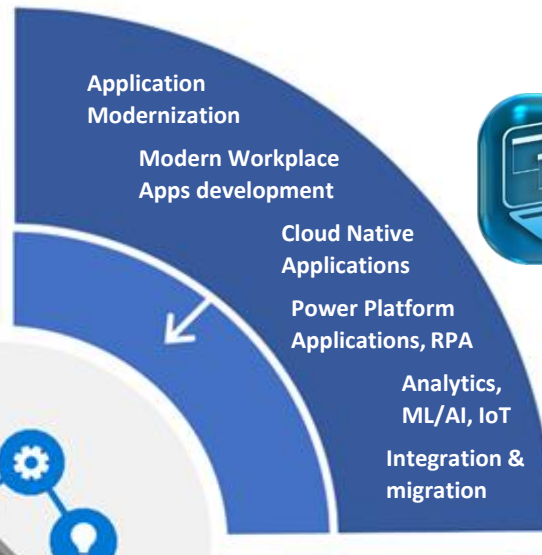


# Portfolio of Services

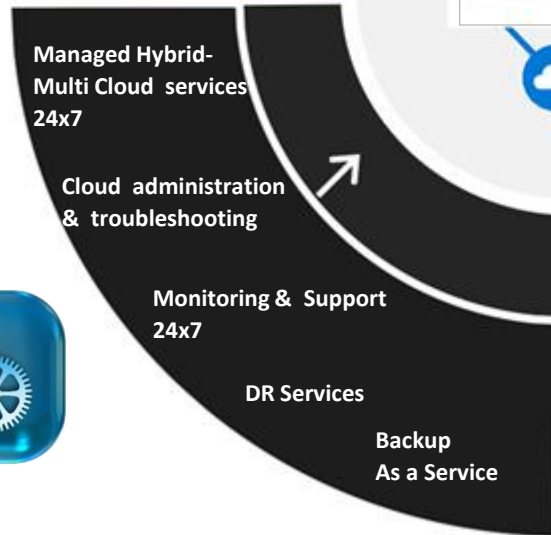
## Dynamic Infrastructure Services



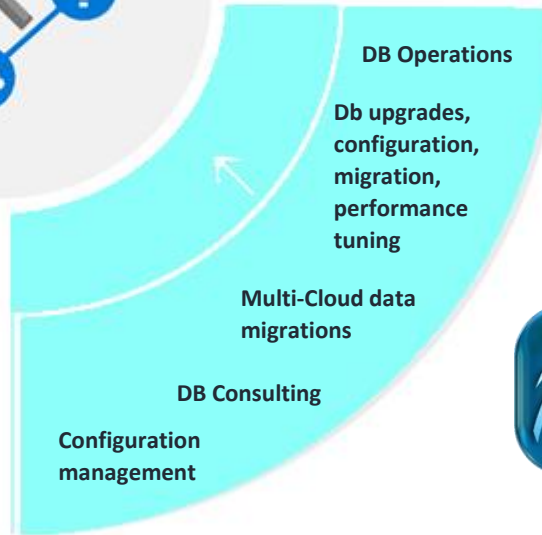
## Application Development Services



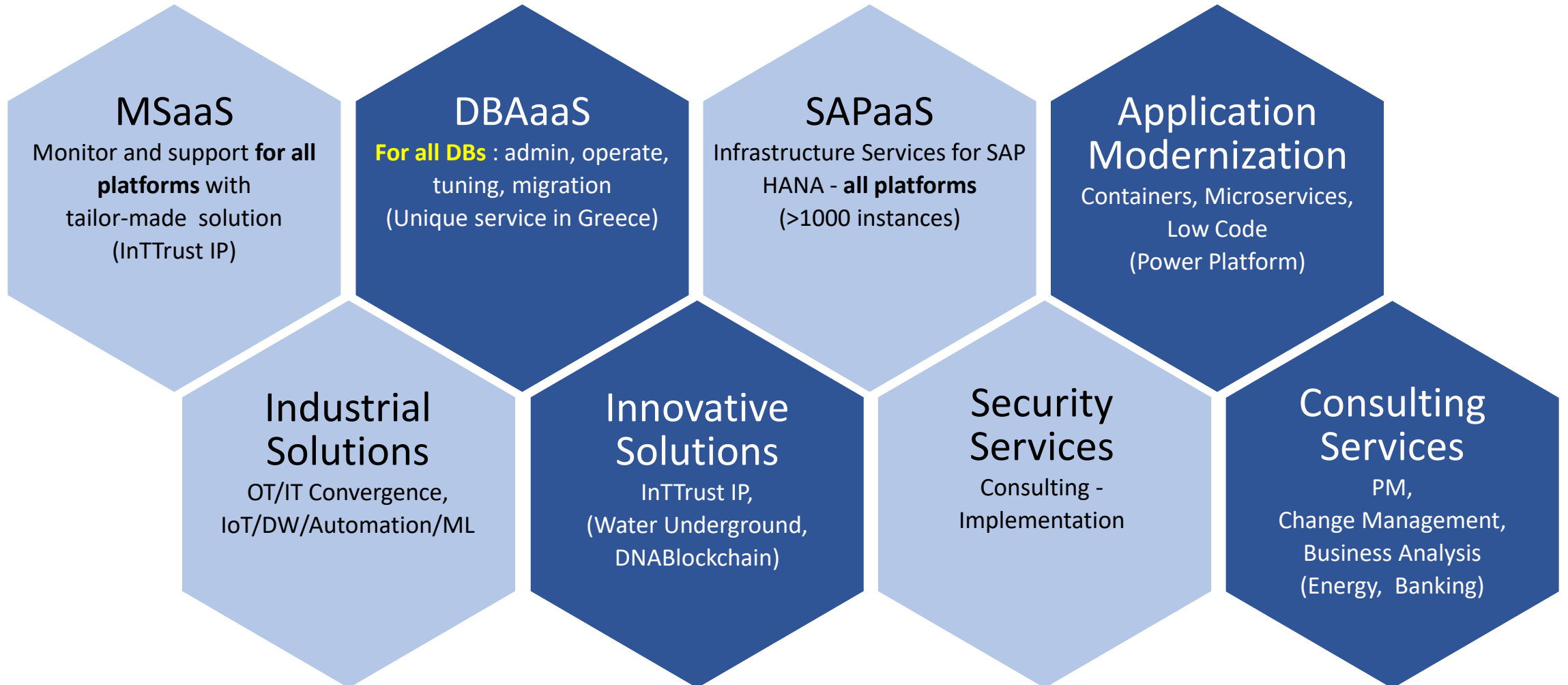
## Managed Services



## DBA Services



# Key differentiators







# Thank you

---

**Euclides Stefanopoulos**  
Unix & Middleware Team Lead  
*estef@intrust.gr*

**Manos Kokolakis, MSc**  
Customer Success Manager  
*mkokolakis@intrust.gr*

